

GUIDEBOOK

SHINE[®]

ST. PETERSBURG MURAL FESTIVAL



October 11-20

PRESENTED BY REFLECTION

SHINE

ST. PETERSBURG MURAL FESTIVAL



  @SHINEONSTPETE #SHINEONSTPETE

www.shinemuralfest.com

PRODUCED BY ST. PETERSBURG ARTS ALLIANCE

Terry Marks, Chief Executive Officer
Charlene Harrison, Director of Operations
Karalyn Sammetinger, Community Advancement Manager
Alexa Espinosa, Marketing Coordinator

SHINE DIRECTOR

Jenee Priebe

STEERING COMMITTEE

Chad Mize, Kathryn Howd, Stacia Shrader,
Amanda Cooper, Allison McCarthy, Brian Schanck,
Elaine Merritt, Jimmy Fashner, Nicole Salgar

SHINE STREET TEAM

Tasko, Matt Parks, Jon Meliferas, Daniel Barojas, Sarah Sheppard

MEDIA TEAM

Todd Burgess, Sunsation Media
Mark Rapien, Mark Rapien Photography, Clay Frapwell





We proudly celebrate a decade of the SHINE Mural Festival!

Bold and diverse in its expression, every mural created over the last 10 years speaks to one unified message: art belongs here. From graffiti writers to fine artists, to sign painters, and illustrators, these creatives have reimagined hundreds of beige walls into captivating moments of self-expression and community engagement. Armed with buckets of paint and aerosol cans, this city comes alive when artists are given the right tools and an opportunity to express themselves freely. Whether a luxury condo or a gritty cultural landmark—you can find a SHINE mural almost anywhere now.

We are honored to present yet another magical year of SHINE, brimming with extra special touches to mark the milestone. Join us as we elevate this incredible artform and the artists that continue to push the medium forward. We are deeply grateful to the sponsors, volunteers and community members that have enabled SHINE to succeed for so many years. Together we make St. Petersburg shine!

Jenee Priebe

Director, SHINE Mural Festival

Artist Lineup

Abys

FRANCE

Cristi López

ST. PETERSBURG

Emmanuel Jarus

CANADA

Fintan Magee

AUSTRALIA

Frankie G.

TAMPA

George F. Baker III

ATLANTA

**Kris Markovich &
Johnny Vitale**

ST. PETERSBURG

NeSpoon

POLAND

Quinn Cale

TAMPA

Stevie Shao

SEATTLE

Up & Over

TAMPA BAY



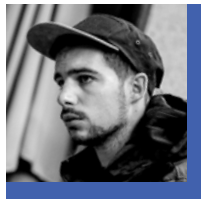
**Bright
Spot
Artists**

- Dwayne Shepherd & Brian McAllister
- Naomi Haverland
- Ya La'Ford
- Zulu Painter

ABYS

FRANCE

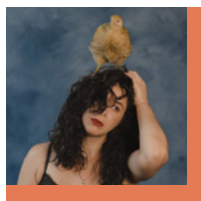
Born in 1991, Julien Brouand, alias Abys is a self-taught French artist from Nancy. Passionate about drawing and cartoon from a young age, he discovered graffiti in 2009. After several years practicing with various collectives, he turned to more personal work in 2015 and stood out by creating his own characters that he stages in lively, narrative, and colorful compositions mixing characters, decorations and lettering.



CRISTI LÓPEZ

ST. PETERSBURG

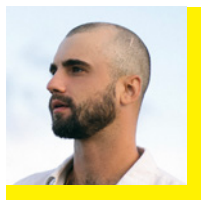
Cristi López (b. 1993) is an artist and mental health advocate splitting time between Tampa Bay and Chicago. She graduated from Ringling College of Art and Design in 2016 with a BFA in Illustration. Her work explores mental health, latinidad, and femininity. Through her intensely personal imagery, she hopes that others will recognize themselves. To be portrayed is to be seen.



EMMANUEL JARUS

CANADA

Emmanuel Jarus is a Canadian artist and muralist, known for his innovative approach to reimagining public spaces. Jarus has spent the last decade collaborating with communities in Canada and around the world, creating large-scale representational work outdoors on buildings, trains, boats and rooftops, among other surfaces. His painting style, heavily influenced by the post-impressionistic period but with the use and reinvention of new materials commonly found in hardware shops, has earned him international acclaim as a contemporary muralist and figurative painter.



Daily Trolley Tours

Reserve your seat today at star-trolley.com/murals

Weekend Bike Tours

<https://floridacraftart.org/product/shine-mural-tours-by-bike/>

A stylized map of St. Petersburg, Florida, with a blue shield containing the number 275, representing the Sunshine Skyway Bridge. The map is overlaid on a purple background with a grid pattern.

275

FINTAN MAGEE

AUSTRALIA

Fintan Magee is a Sydney based social realist painter, specializing in large-scale murals. His earlier large-scale paintings often inhabited the isolated, abandoned and broken corners of the city, and today are found all over the world. His works exude an inherent sentimentality and softness influenced by children's books and the Low Brow art movement. In recent years, Magee has solidified his position as one of Australia's leading public artists.



KRIS MARKOVICH & JOHNNY VITALE

ST. PETERSBURG

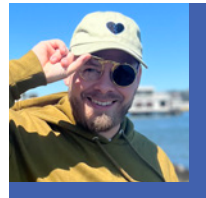
Kris Markovich is a world renowned professional skateboarder and artist since the early 90's. Whether on a ladder with a can in his hand or on his board out in the streets, Kris continues to push his art out to the world. Johnny Vitale is a founding member of the Vitale Bros., St. Petersburg's most prolific muralists. With over 30 years experience painting, Johnny lends his individual style to this collaborative mural.



FRANKIE G.

TAMPA

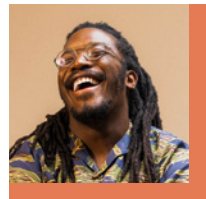
Frankie G is a Miami-born, Florida-based artist specializing in emotive storytelling through a juxtaposition of his love of different artistic styles such as comic, urban, and traditional painting techniques. Drawing on Frankie's bold colors and mixture of subject matter, he has attracted private collectors, high-profile companies, and celebrities alike. Through his work, he aims to illuminate the human condition in a fresh, relatable way.



GEORGE F. BAKER III

ATLANTA

George F. Baker III, also known as GFB3, is a Nebraska-born, Detroit Grown, and Atlanta-Raised Creator. Using his instruments of design, illustration, and production, he employs a playful childlike spirit to engage the inner-child we all have. With a bevy of creative curiosity, he seeks to inspire people to become the person they deeply desire to be.



NESPOON

POLAND

NeSpoon's work has appeared in over 100 cities, in 40 countries on 5 continents, in the public space, in museums and galleries. She creates on the border of urban art, painting and traditional ceramics. Lace patterns became her signature style.

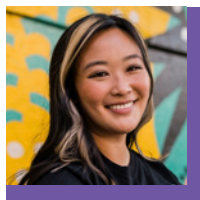


STEVIE SHAO

SEATTLE

Stevie Shao is a Seattle born-and-raised illustrator and muralist whose work draws inspiration from her love of plants and animals from the region, historic illustration styles, and her Chinese background.

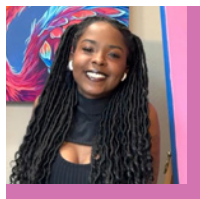
Shao has worked with a variety of freelance clients, including REI, Outdoor Research, Nordstrom, Google, and Sub Pop Records, and painted vibrant large scale murals in cities across the country. She is passionate about local causes related to environmental stewardship, racial justice and preserving historic community roots.



QUINN CALE

TAMPA

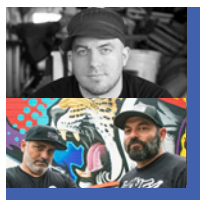
Quinn Cale is a vibrant contemporary painter, based in Tampa, Florida. Hailing from Middletown, Delaware, her artistic journey is deeply intertwined with her nostalgic reflections on childhood. Through her colorful canvases, Quinn masterfully captures the essence of early 2000s, infusing each piece with a palpable sense of joy and reminiscence. Her distinctive style a visual ode to the vibrant spirit of those formative years, inviting viewers to immerse themselves in vivid hues and playful compositions.



UP & OVER

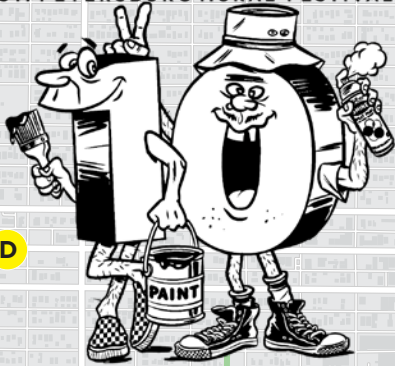
TAMPA BAY

Founder of the SHINE Mural Festival, Leon "Tes One" Bedore, is known for his signature blend of traditional art and graphic design. Tes confronts contrast in all forms; splicing divisions and redefining the balance. Color and cause run to the edge in full bleed. The Vitale Bros. are St. Petersburg's most prolific muralists, transforming public spaces for more than 30 years. This powerful design collaboration of Tes One & Vitale Bros. paint under the moniker Up&Over.



SHINE

ST. PETERSBURG MURAL FESTIVAL



1 Emmanuel Jarus
Walker Whitney Plaza
226 5th Ave N

2 Quinn Cale
Main Grove
225 2nd Ave N

3 George F. Baker III
Studio@620
620 1st Ave S

4 Fintan Magee
Reflection St. Pete
777 3rd Ave N

5 Stevie Shao
Volunteers of America
850 5th Ave S

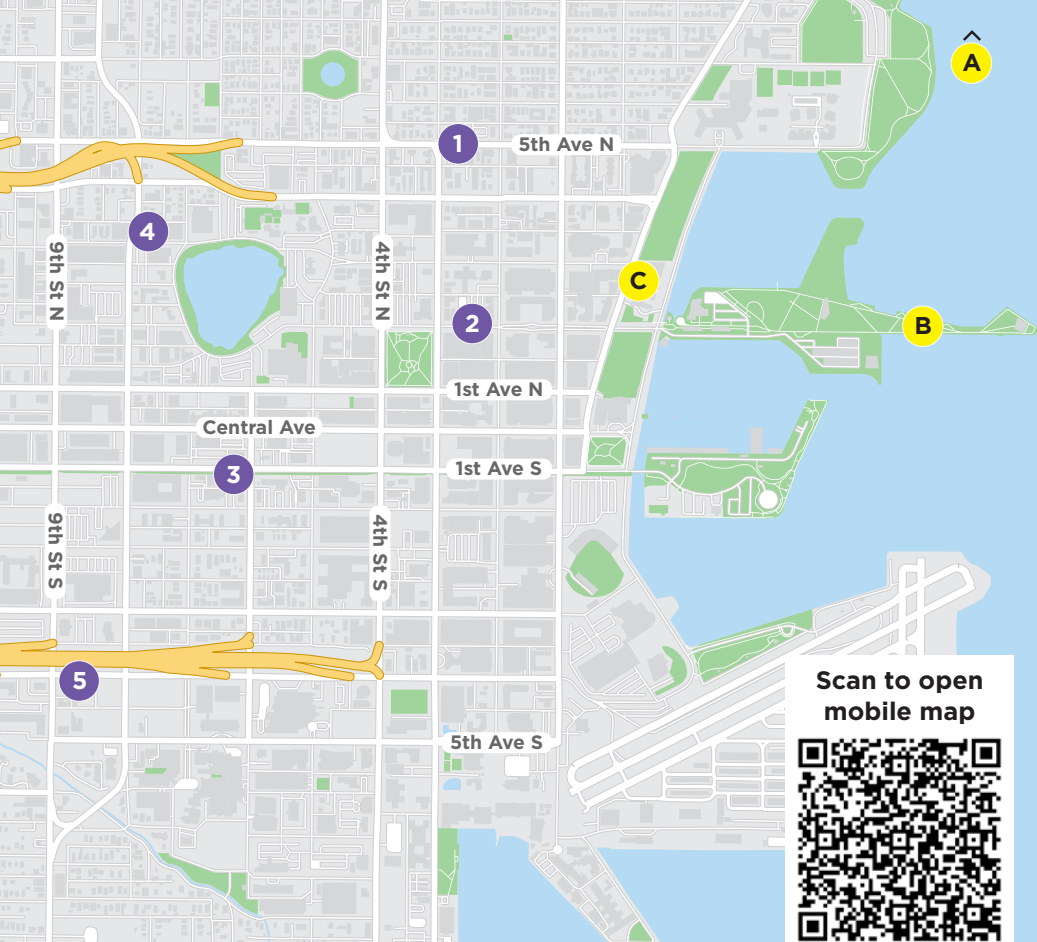
6 Kris Markovich & Johnny Vitale
Anchor Skate Supply
501 16th St S

7 Abys
Modera St. Pete
201 17th St S

8 Up & Over
Modera St. Pete
201 17th St S

9 NeSpoon
Cemex
601 24th St S

10 Frankie G.
FloridaRAMA
2606 Fairfield Ave S



11

Cristi López

Groovehaven
2655 Fairfield Ave S



Bright Spots

A

Life Lessons

Zulu Painter & AMI Kids
AMI Kids
12022 Gandy Blvd
not shown on map

C

Community SHINES

Ya La'Ford & The Community
Museum of Fine Arts
255 Beach Drive NE

B

How's the Water?

Naomi Haverland &
City of St. Petersburg
Discovery Center on the Pier
700 2nd Ave NE

D

The Importance of Art Education

Dwayne Shepherd & Brian
McAllister in Partnership
with FAEA
Bell Pharmacy
3535 Central Ave
not shown on map

ZULU PAINTER & AMI KIDS

Zulu Painter is an international multi-media artist who works in traditional mediums as well as special effects and scenic art. Zulu's large scale mural work can be seen across the country and contributes to the art revitalization in communities throughout the USA. The vibrant colors in his paintings help to convey his goal of creating Art that uplifts the viewer with positive energy. "Grow art everywhere" is his motto as he travels the world creating "Mindful Murals for all to enjoy."

Zulu Painter partners with AMI Kids, a nonprofit organization dedicated to empowering young people to discover their true potential. For more than 55 years, AMI Kids has guided youth through education, workforce development, treatment and behavior and skills training, with a specific focus on marine education here in Pinellas County.



Bright Spots



Naomi Haverland is a Florida-based visual artist known for her hyper-realistic portraits, 3D illusions and anamorphic art executed with the most

impressive quality. She has won many awards for her artwork and has been invited to travel to international festivals in Germany, Canada, and Mexico. She has been commissioned by brands such as Microsoft, Amazon, Harley Davidson, Skittles, and Blick Art Supply.

NAOMI HAVERLAND & THE CITY OF ST. PETERSBURG

Naomi's mural is presented by the City of St. Petersburg at the St. Pete Pier™ on the Tampa Bay Watch Discovery Center presented by the Milkey Family Foundation! It brings awareness to the smallest of creatures that are an essential part of Tampa Bay's marine eco-system. Naomi captures a vibrant, interactive ring of plankton species found in our local waters. Plankton are the ocean's hidden gems, crucial to marine ecosystems and to life on Earth. As the base of the oceanic food web, plankton support a vast array of sea life, from tiny oysters to large whales. Phytoplankton produce more than 50% of the oxygen we breathe through photosynthesis and play a vital role in carbon dioxide absorption, helping regulate the planet's climate. Learn more at the Discovery Center's new exhibit "How's the Water?" which aims to highlight the importance of these microscopic organisms.



Bright Spots

YA LA'FORD & THE COMMUNITY

Ya La'Ford is an artist, educator, and foremost a transporter—working between the visual and the complexities of the human community with layered meanings—through a wide range of media including paint, sculpture, installation, video, and sound. She received her Master of Fine Arts in Interdisciplinary Arts from The Art Institute of Boston and also holds a Juris Doctor from the University of Florida's Levin College of Law.

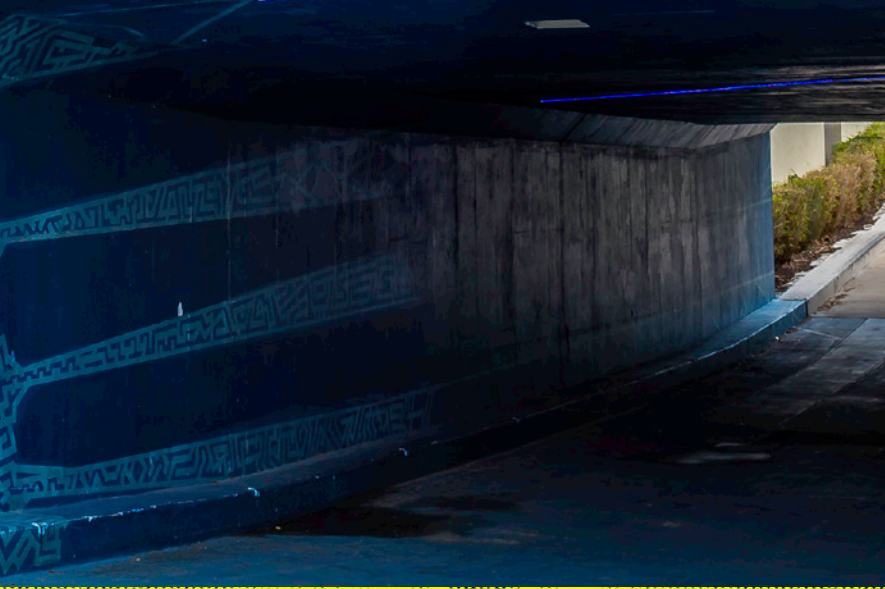
La'Ford invites the community to participate in a hands-on mural making experience to celebrate a decade of the SHINE St. Petersburg Mural Festival and its impact in St. Pete.

SHINE 10 merch drop!

Celebrate creativity with an exclusive collection of graphic tees and accessories.

shinemuralfest.store





DWAYNE SHEPHERD & BRIAN MCALLISTER IN PARTNERSHIP WITH FAEA

Dwayne Shepherd has been making and selling art since he was 10 years old. He has been a Visual Arts Teacher at Osceola Middle School for 22 years and has been involved with many art organizations like the Dali Museum, Morean Arts Center, and Pinellas Art Education Association. Brian McAllister is an international muralist, illustrator, and visual arts instructor at Gibbs High School. Together, Dwayne and Brian collaborate with art educators from across the state of Florida during the Florida Arts Education Association's (FAEA) annual conference in October.



सूर्यकांति समप्रभ निविंघ्नं कुरु मे देव सर्वकार्येषु सर्वदा



10/11 5-8pm

Opening Event: SHINE 10 Year Retrospective Group Exhibition at the Morean Arts Center

See works from over 100 SHINE artists from the past decade, including work from local, national, and international artists on this year's lineup.

10/19 7-10pm

SHINE 10 Finale Event at FloridaRAMA

The festival culminates at FloridaRAMA featuring a solo exhibition by Chris Dyer, custom installations from Ricky Watts and Nicole Salgar, music and special performance by Woes Martin & The Mighty Giants, Giano Currie's interactive photography experience, After Hours Photoshoot and more. The finale event is free and open to the public.

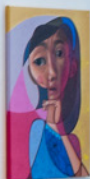
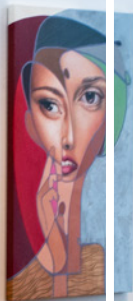
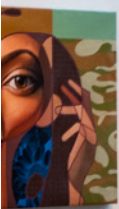
A limited number of tickets are available for purchase to gain access to the SHINE VIP experience.

Visit shinemuralfest.com for tickets and more information.



सूर्यकांति समप्रभ निविंघ्नं कुरु मे देव सर्वकार्येषु सर्वदा

Events



2024 SHINE SPONSORS

REFLECTION



  @SHINEONSTPETE #SHINEONSTPETE

www.shinemuralfest.com